

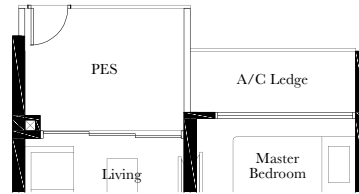
# 1-BEDROOM

## TYPE A1-P

44 SQ M / 474 SQ FT

### BLK 1

#02-01\*, #02-04,  
#02-05\*, #02-09, #02-10\*

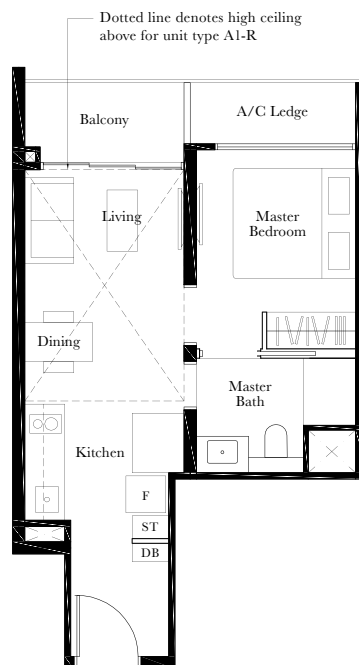


## TYPE A1

42 SQ M / 452 SQ FT

### BLK 1

#03-01\* to #14-01\*  
#03-04 to #14-04  
#03-05\* to #14-05\*  
#03-09 to #14-09  
#03-10\* to #14-10\*  
#03-16 to #14-16



## TYPE A1-R

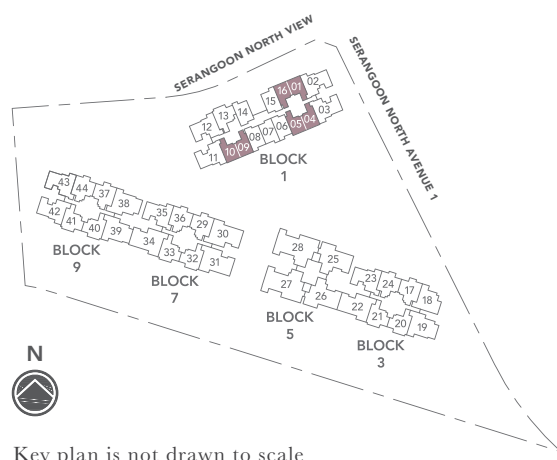
53 SQ M / 570 SQ FT

Including strata void area of 11 sq m / 118 sq ft above living and dining

Approximate 4.5 m floor to ceiling height at living and dining

### BLK 1

#15-01\*, #15-04, #15-05\*,  
#15-09, #15-10\*, #15-16



Key plan is not drawn to scale



AREA INCLUDES AIR-CON (A/C) LEDGE, PRIVATE ENCLOSED SPACE (PES), BALCONY AND STRATA VOID AREA WHERE APPLICABLE. SOME UNITS ARE MIRROR IMAGES OF THE APARTMENT PLANS SHOWN IN THE BROCHURE. PLEASE REFER TO THE KEY PLAN FOR ORIENTATION. THE PLANS ARE SUBJECT TO CHANGE AS MAY BE APPROVED BY RELEVANT AUTHORITIES. ALL FLOOR PLANS ARE APPROXIMATE MEASUREMENTS ONLY AND ARE SUBJECT TO GOVERNMENT RE-SURVEY. THE BALCONY SHALL NOT BE ENCLOSED UNLESS WITH THE APPROVED BALCONY SCREEN. FOR AN ILLUSTRATION OF THE APPROVED BALCONY SCREEN, PLEASE REFER TO THE DIAGRAM ANNEXED HERETO AS "BALCONY SCREEN".

# 1-BEDROOM

## TYPE A2-P

43 SQ M / 463 SQ FT

**BLK 3**

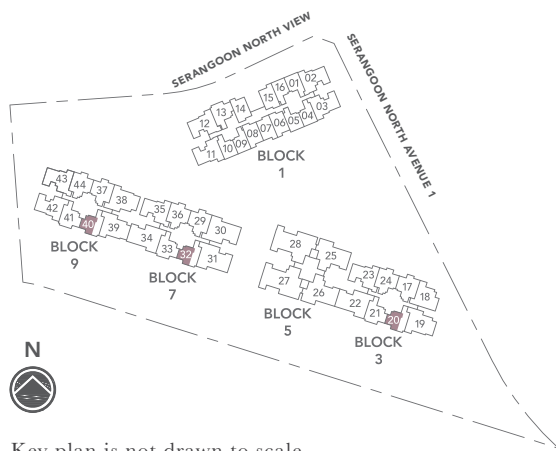
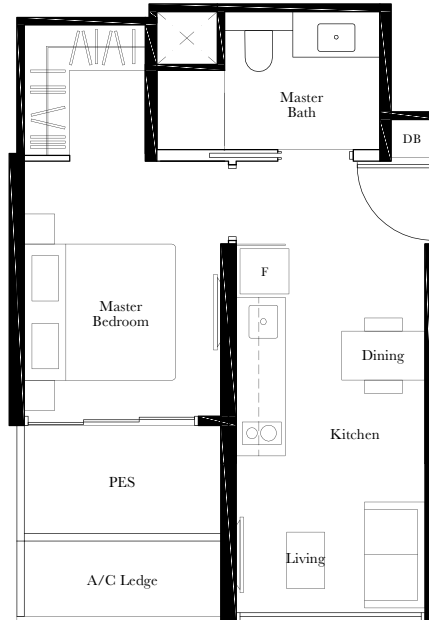
#02-20

**BLK 7**

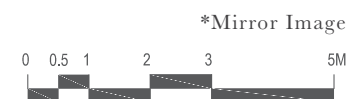
#02-32

**BLK 9**

#01-40



Key plan is not drawn to scale



AREA INCLUDES AIR-CON (A/C) LEDGE, PRIVATE ENCLOSED SPACE (PES), BALCONY AND STRATA VOID AREA WHERE APPLICABLE. SOME UNITS ARE MIRROR IMAGES OF THE APARTMENT PLANS SHOWN IN THE BROCHURE. PLEASE REFER TO THE KEY PLAN FOR ORIENTATION. THE PLANS ARE SUBJECT TO CHANGE AS MAY BE APPROVED BY RELEVANT AUTHORITIES. ALL FLOOR PLANS ARE APPROXIMATE MEASUREMENTS ONLY AND ARE SUBJECT TO GOVERNMENT RE-SURVEY. THE BALCONY SHALL NOT BE ENCLOSED UNLESS WITH THE APPROVED BALCONY SCREEN. FOR AN ILLUSTRATION OF THE APPROVED BALCONY SCREEN, PLEASE REFER TO THE DIAGRAM ANNEXED HERETO AS "BALCONY SCREEN".