

4-BEDROOM DELUXE

TYPE D2

111 SQ M / 1195 SQ FT

BLK 5

#03-25* to #14-25*

#03-26 to #14-26

TYPE D2-R

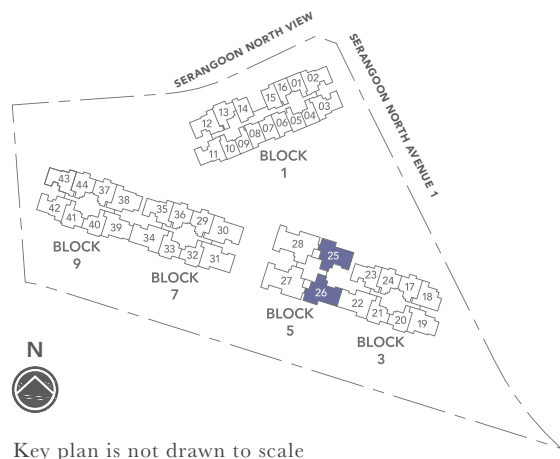
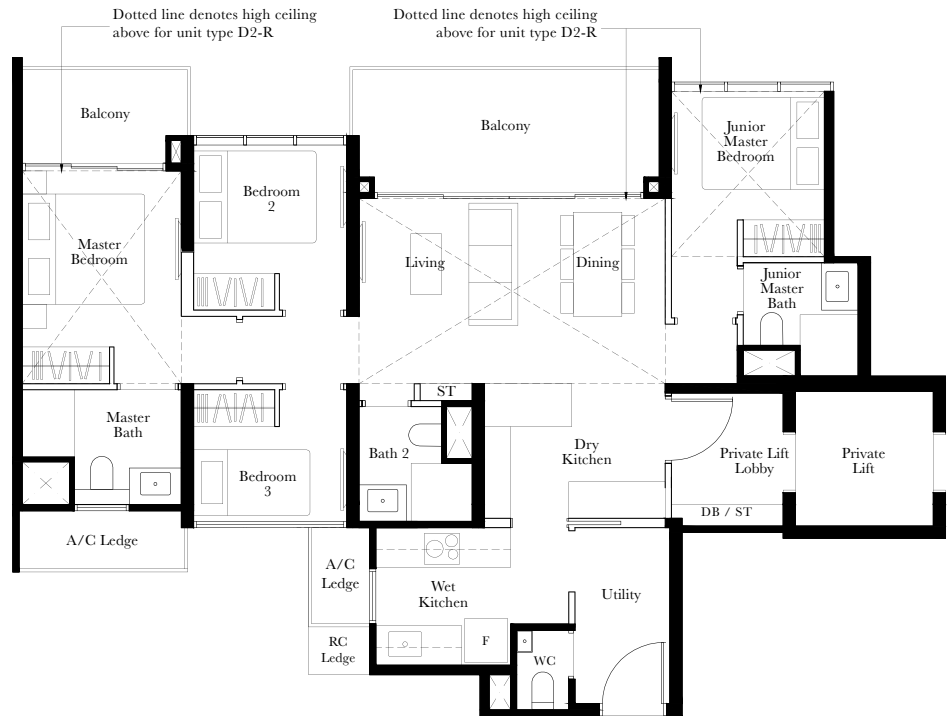
145 SQ M / 1561 SQ FT

Including strata void area of 34 sq m / 366 sq ft above living, dining, master bedroom and junior master bedroom

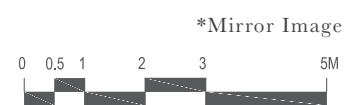
Approximate 4.5 m floor to ceiling height at living, dining, master bedroom and junior master bedroom

BLK 5

#15-25*



Key plan is not drawn to scale



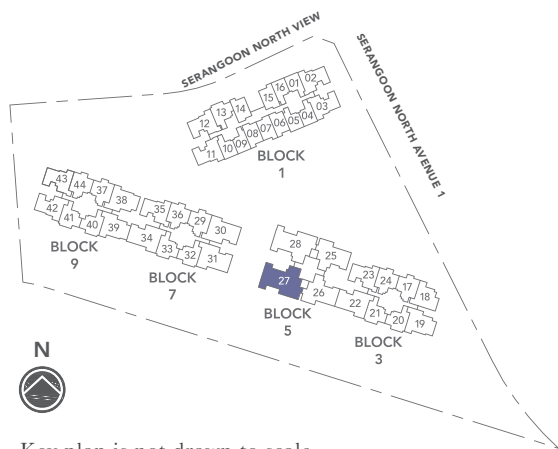
AREA INCLUDES AIR-CON (A/C) LEDGE, PRIVATE ENCLOSED SPACE (PES), BALCONY AND STRATA VOID AREA WHERE APPLICABLE. SOME UNITS ARE MIRROR IMAGES OF THE APARTMENT PLANS SHOWN IN THE BROCHURE. PLEASE REFER TO THE KEY PLAN FOR ORIENTATION. THE PLANS ARE SUBJECT TO CHANGE AS MAY BE APPROVED BY RELEVANT AUTHORITIES. ALL FLOOR PLANS ARE APPROXIMATE MEASUREMENTS ONLY AND ARE SUBJECT TO GOVERNMENT RE-SURVEY. THE BALCONY SHALL NOT BE ENCLOSED UNLESS WITH THE APPROVED BALCONY SCREEN. FOR AN ILLUSTRATION OF THE APPROVED BALCONY SCREEN, PLEASE REFER TO THE DIAGRAM ANNEXED HERETO AS "BALCONY SCREEN".

4-BEDROOM DELUXE

TYPE D3-P

132 SQ M / 1421 SQ FT

BLK 5
#02-27



Key plan is not drawn to scale



AREA INCLUDES AIR-CON (A/C) LEDGE, PRIVATE ENCLOSED SPACE (PES), BALCONY AND STRATA VOID AREA WHERE APPLICABLE. SOME UNITS ARE MIRROR IMAGES OF THE APARTMENT PLANS SHOWN IN THE BROCHURE. PLEASE REFER TO THE KEY PLAN FOR ORIENTATION. THE PLANS ARE SUBJECT TO CHANGE AS MAY BE APPROVED BY RELEVANT AUTHORITIES. ALL FLOOR PLANS ARE APPROXIMATE MEASUREMENTS ONLY AND ARE SUBJECT TO GOVERNMENT RE-SURVEY. THE BALCONY SHALL NOT BE ENCLOSED UNLESS WITH THE APPROVED BALCONY SCREEN. FOR AN ILLUSTRATION OF THE APPROVED BALCONY SCREEN, PLEASE REFER TO THE DIAGRAM ANNEXED HERETO AS "BALCONY SCREEN".